



48 Bowery Apartments Fountain Park Way, London, W12 7HZ
£635 Per Week



48 Bowery Apartments Fountain Park Way, London, W12 7HZ

£635 Per Week

A stunning and extremely bright 9th floor 1 bed roomed apartment.

The property has been recently completed to an extremely high standard offering spacious and modern accommodation.

The property comprises of 1 double bedroom with fitted wardrobes a fully equipped kitchen open plan into the sitting room, bathroom, excellent storage, and private patio balcony.

The property further benefits from a lift, 24 concierge access to the gym and swimming pool, cinema, and residences lounge.

The property is situated close to all major transport links, fantastic amenities, and good schools.

Description



Situation

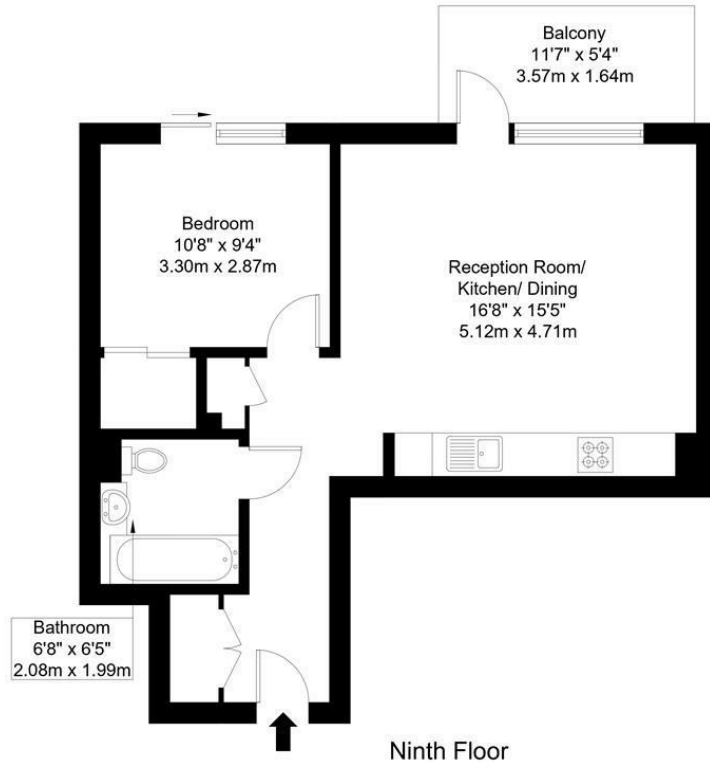


Furnished
Council Tax Band: E
Available: 1st June 2026

Floor Plans

Fountain Park Way, W12 7HZ

Approx Gross Internal Area = 49.70 sq m / 535 sq ft
 Balcony = 6.18 sq m / 66 sq ft
 Total = 55.88 sq m / 601 sq ft

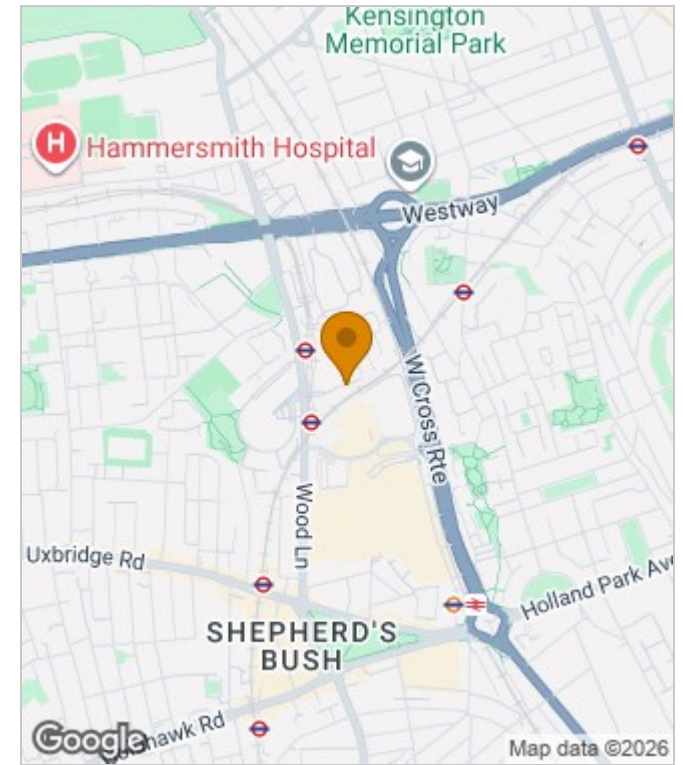


Ref :

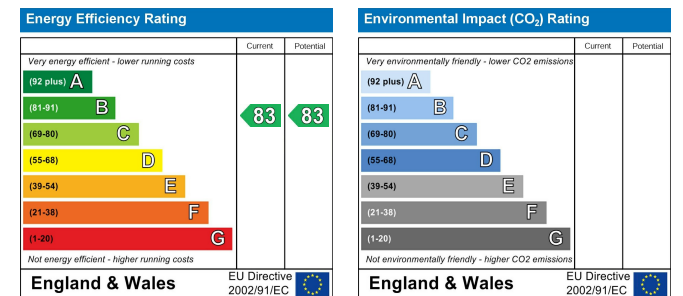
Copyright **BLEU PLAN**

The Floor plan is not to scale and measurements and areas shown are approximate and therefore should be used for illustrative purposes only. The plan has been prepared in accordance with the RICS code of Measuring Practice and whilst we have confidence in the information produced it must not be relied on. Maximum lengths and widths are represented on the floor plan. If there is any aspect of particular importance, you should carry out or commission your own inspection of the property.
 Copyright © BleuPlan

Area Map



Energy Performance Graph



These particulars, whilst believed to be accurate are set out as a general outline only for guidance and do not constitute any part of an offer or contract. Intending purchasers should not rely on them as statements of representation of fact, but must satisfy themselves by inspection or otherwise as to their accuracy. No person in this firm's employment has the authority to make or give any representation or warranty in respect of the property.